

Professional development

Embedded, in-the-moment professional development

Unit-level professional development

The Unit Overview for each unit includes a Professional Development page, which lists opportunities for teachers to deepen their understanding of the math in the unit and how to teach it.

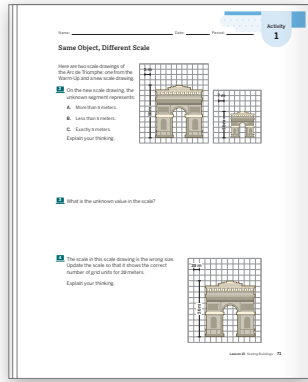
In 2025–26, unit-level supports will include a Unit Overview Video, which provides teachers with an overview of the content and key features of the unit. These videos tell the story of the unit and how the sub-units fit together to create an aligned experience for students. Key instructions, models, and strategies used within the unit are showcased, when appropriate.

Professional Learning

Here is an opportunity to deepen your understanding of the math in this unit and how to teach it.

Spotlight on Conceptual Understanding

Lesson 10, Screens 2–3



Same Object, Different Scale

Here are two scale drawings of the same object. Consider the width of each scale drawing.

On the new scale drawing, the unknown length represents:

- None of the options.
- Less than 1 meter.
- Exactly 1 meter.
- More than 1 meter.

What is the unknown value in the scale?

The scale in this scale drawing is the same as the scale in the other scale drawing. How many grid units for 10 meters?

Context

In this activity, students strengthen their understanding of how the choice of a scale affects the size of a scale drawing.

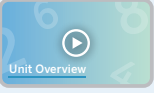
Try This

Put on your student hat and complete Screens 2 and 3.

Points to Ponder

- What do students need to understand about scale to support their resizing scale drawings?
- Some students may think that because the new scale drawing is smaller, each grid unit represents less distance. How might you support students' reasoning about the relationship between the scale and the size of the drawing?

▶ Unit Overview Video



Unit Overview

Unit Overview videos provide you with an overview of the content and key features of the unit. The videos tell the story of the unit and how the sub-units fit together to create an aligned experience for students. When possible, key interactions, models, and strategies used within the unit are showcased.

Unit 1 Scale Drawings

Lesson-level professional development

Each Amplify Desmos Math lesson provides a moment of professional learning as an opportunity for teachers to reflect on how well the lesson went. These professional learning moments can relate to principles, instruction, pedagogy, or program content.

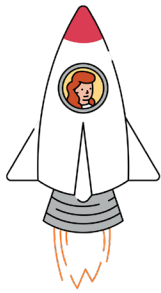
Professional Learning

Reflect on the strategies students used today. What opportunities were there to share specific students' strategies with the class and celebrate them? What facilitation techniques (e.g., using the Snapshot tool or naming strategies after the students) can help make this a part of your classroom culture? How might you continue to reference student strategies from today in the future?

Reflect on the student thinking that was shared in this lesson. Who participated and who did not participate in sharing? What trends do you see in participation?

Professional development sessions tailored to your needs.

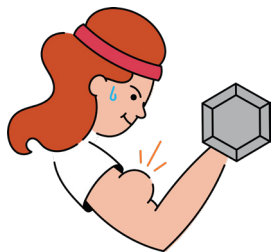
Amplify's professional development team supports both teachers and administrators throughout their entire implementation journey.



Launch

On-site and virtual Launch sessions introduce Amplify programs and support strong implementation.

After learning about the program's foundational principles and key features, you'll practice implementing the program within a collaborative environment.



Strengthen

On-site and virtual Strengthen sessions deepen understanding of the program. Session offerings are targeted and meant to take your practice—and your students' learning—to the next level.

Offered as part of core packages, as well as enhancements, Strengthen sessions are intended to effectively address your students' needs. Examples include:

- Supporting student math discussion
- Unit-level planning
- Leveling up with teaching tools



Coach

On-site and virtual Coach sessions are tailored to elevate instructional practices and meet the unique needs of teachers and/or leaders.

Partner with an Amplify coach who will support you in planning customized sessions leveraging our menu of supports, which can include:

- Lesson-modeling by an Amplify facilitator.
- Classroom observations and debriefs.
- Grade-level planning.